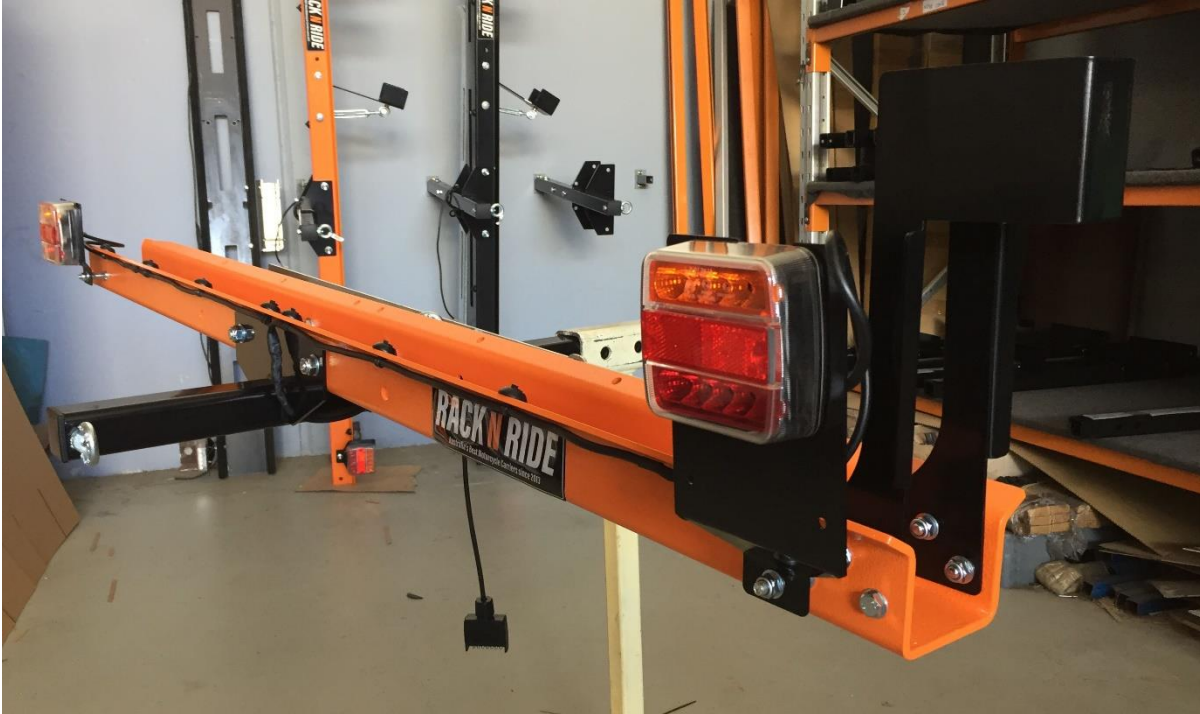




Channel eBike Tips:

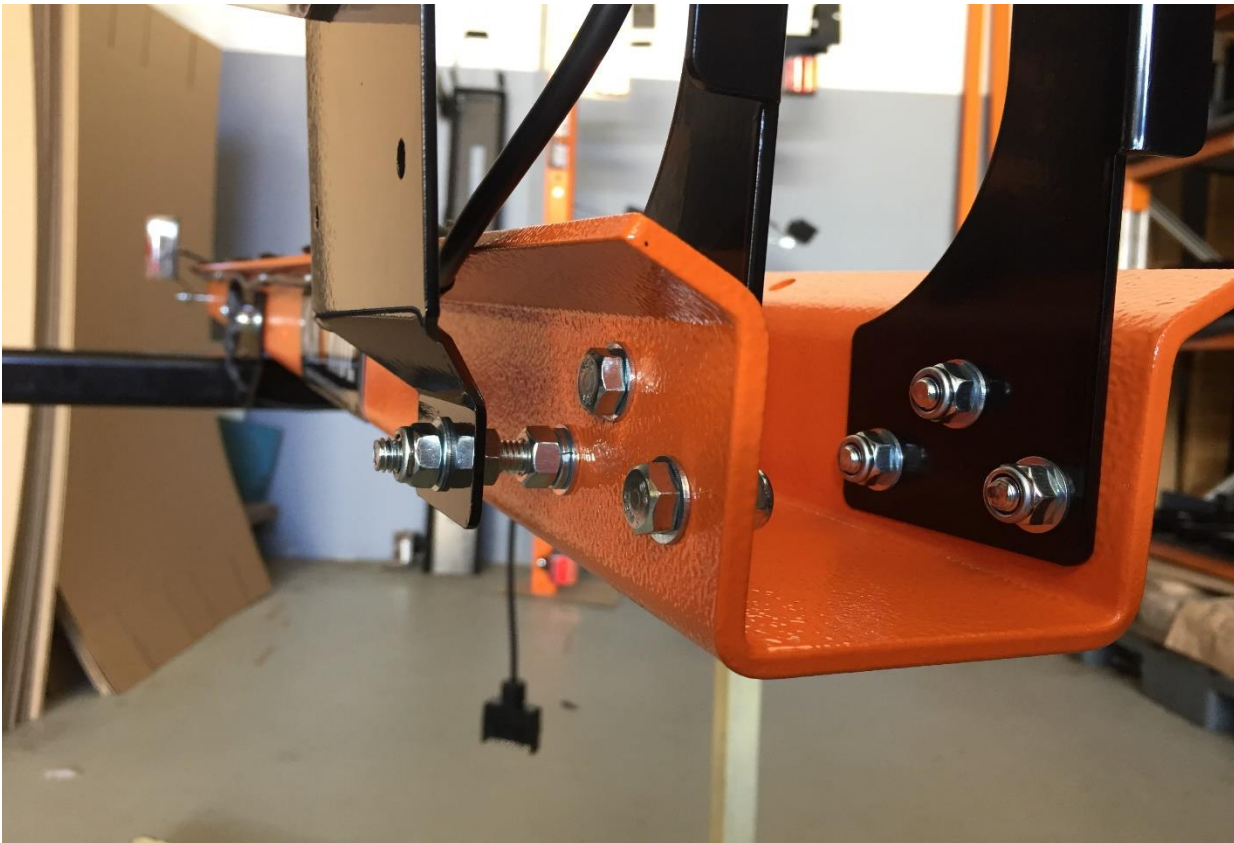
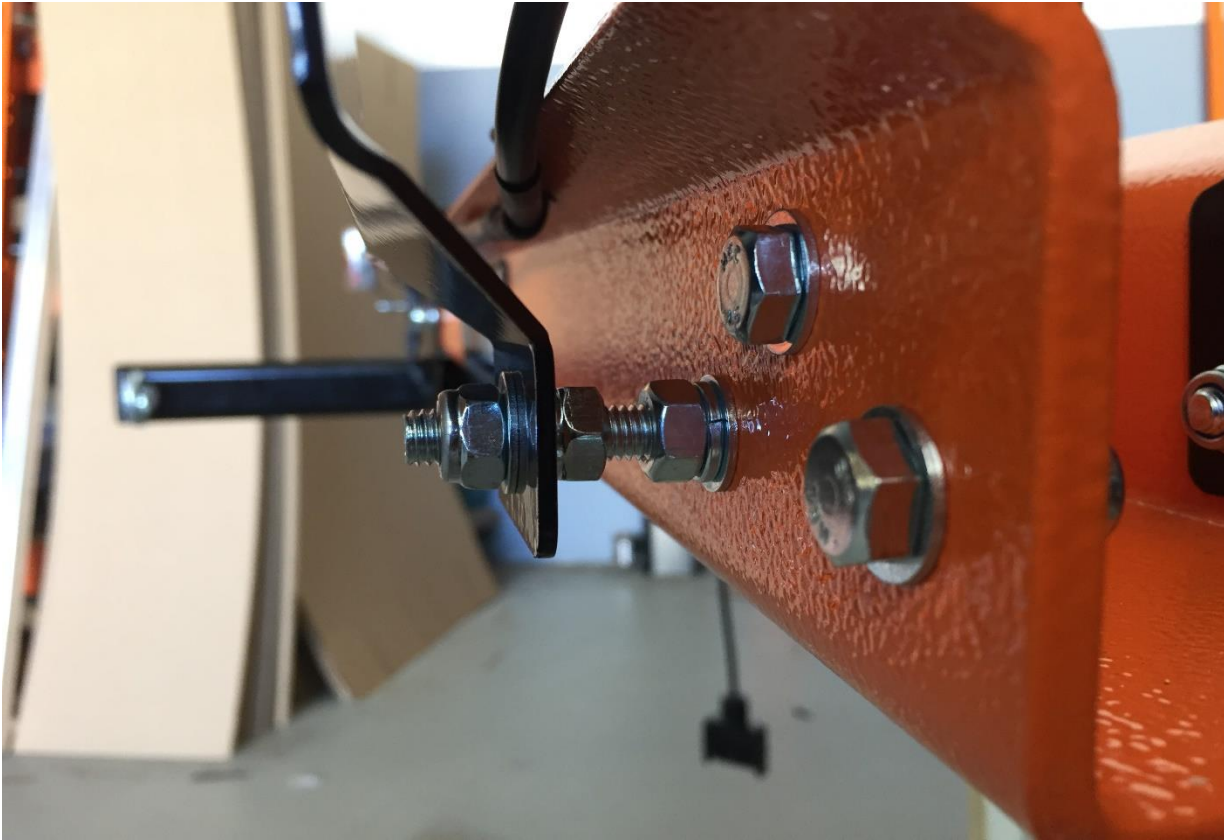


Check for LED with Number Plate light out the base.



LED Brackets stand off the rack.

RH LED Bracket is bigger for Rego Plate, uses hole for Nose Cone also.





There will be spare cable at each end





Start with cable joint at the top and work outwards. This leaves the slack cable near the LED's and out of the way.

Feed Cable through holes in Main Bar to protect it



Wiring Code :

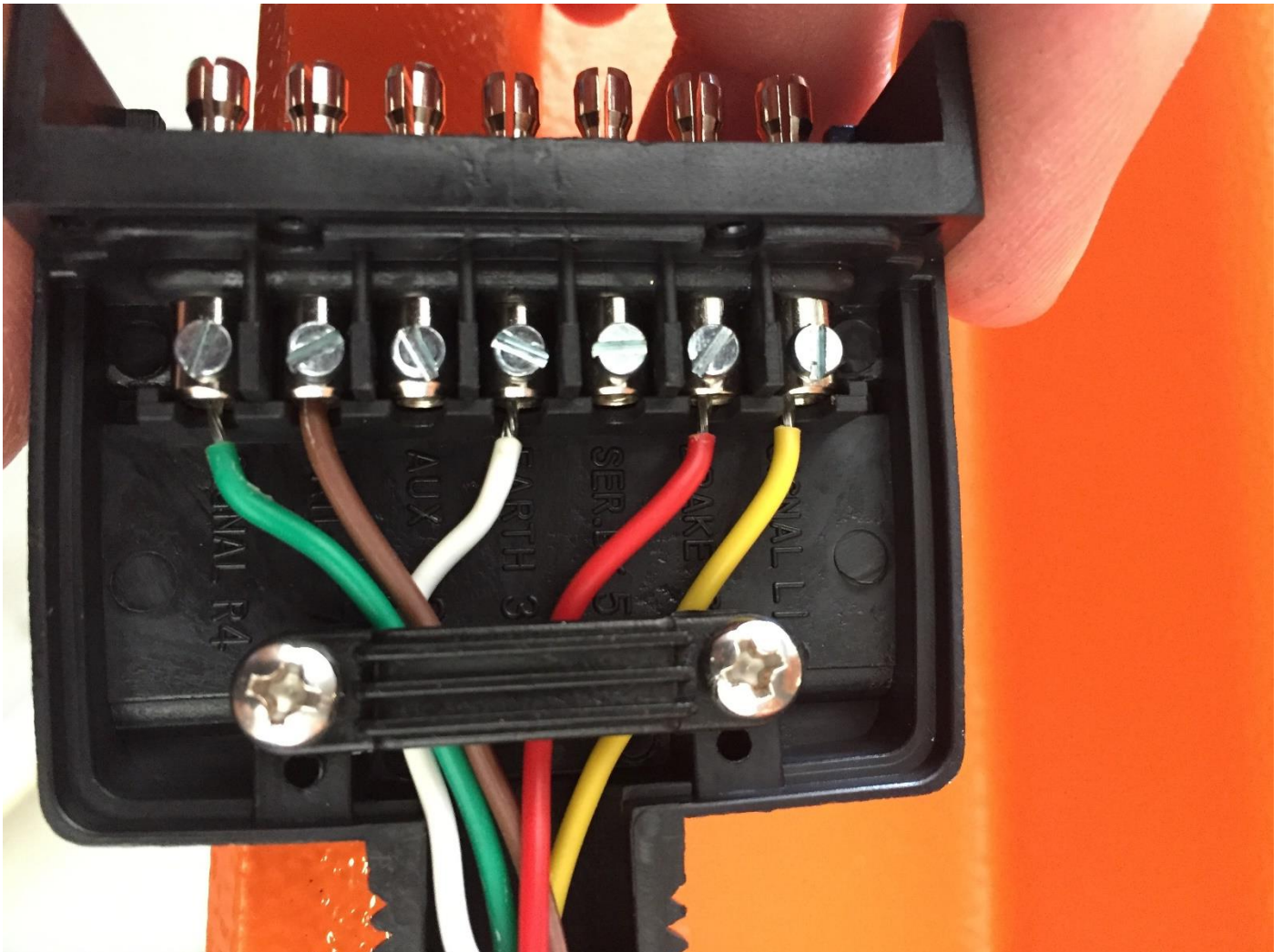
Signal L – Yellow

Brake – Red

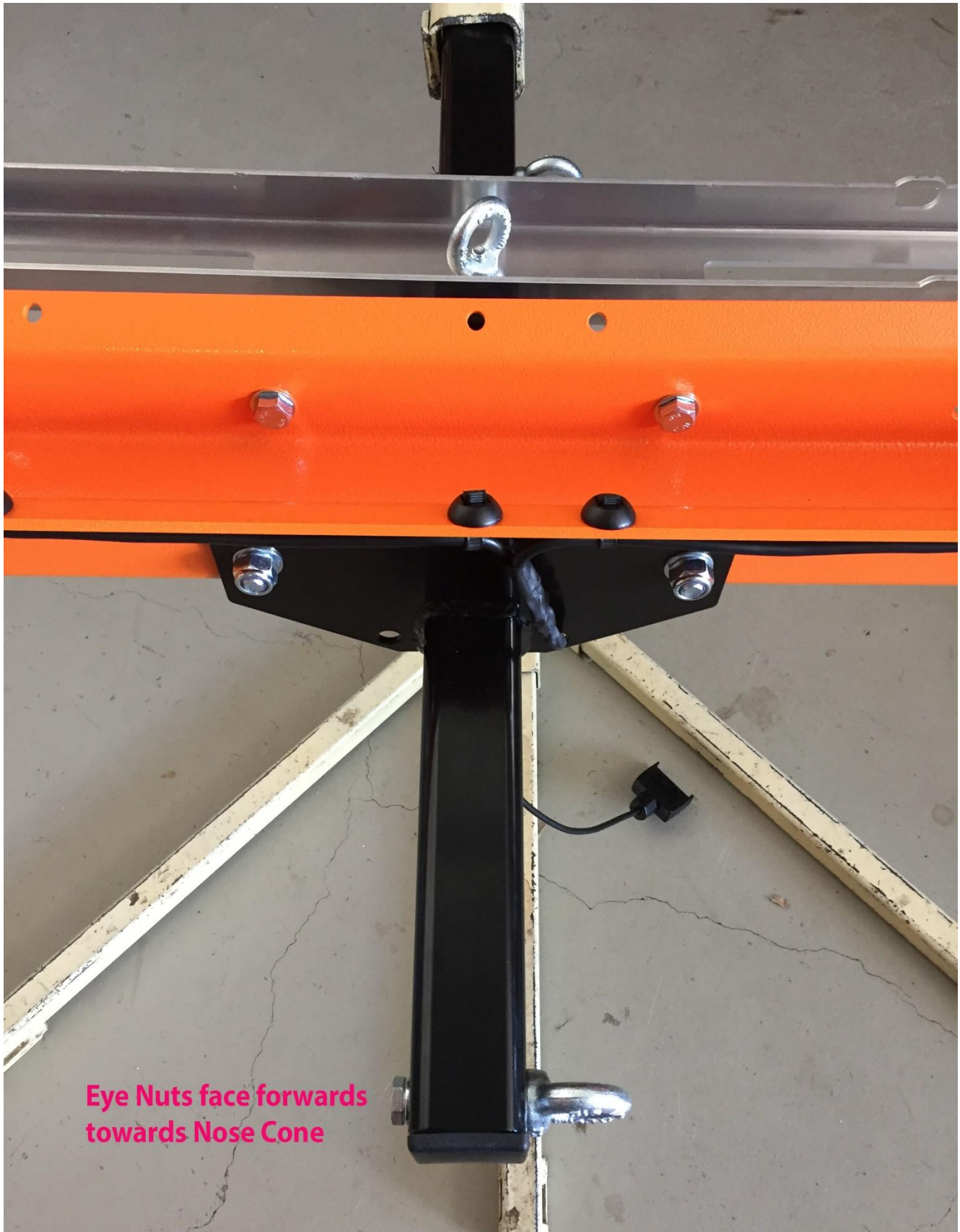
Earth – White

Tail – Brown

Signal R - Green



Eye Nuts Face towards Front Tyre, Nose Cone.



**Eye Nuts face forwards
towards Nose Cone**

Loading Ramp stores on vertical Bolt.





Use this Bolt to
toghten and
loosen Ramp

Gal Cuphead Bolt locks ramp on to bike channel for loading, unloading bike.



**Same Bolt secures
Ramp to Bike Channel
for Loading / Unloading**



Gal Cuphead Bolt also secures ramp for transport.



Any other questions call me.

Leeroy 0402 669686